



Direct connect with
Windows

Erlab units require you to connect with the supplied RJ45 cable for setting configurations

SMART

321	392	633
391	632	714
481	483	



Storage

822	1634
832	
834	



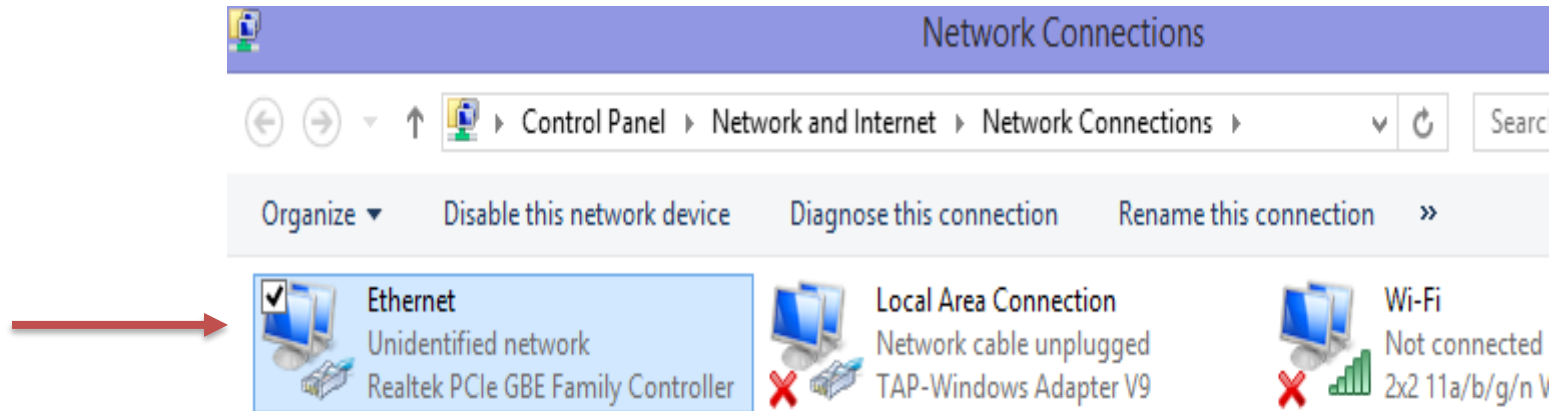
Halo
Halo Sense



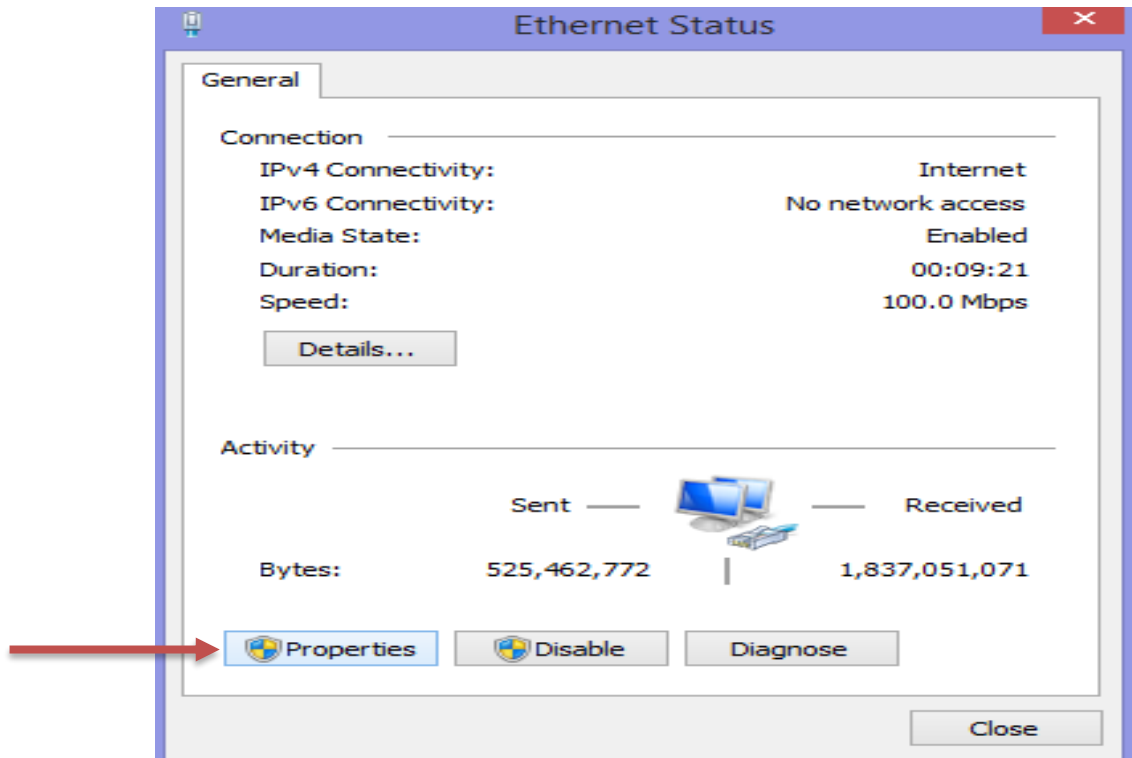
Change adapter settings: Open Control panel Go to Network and Internet “View network status and tasks”



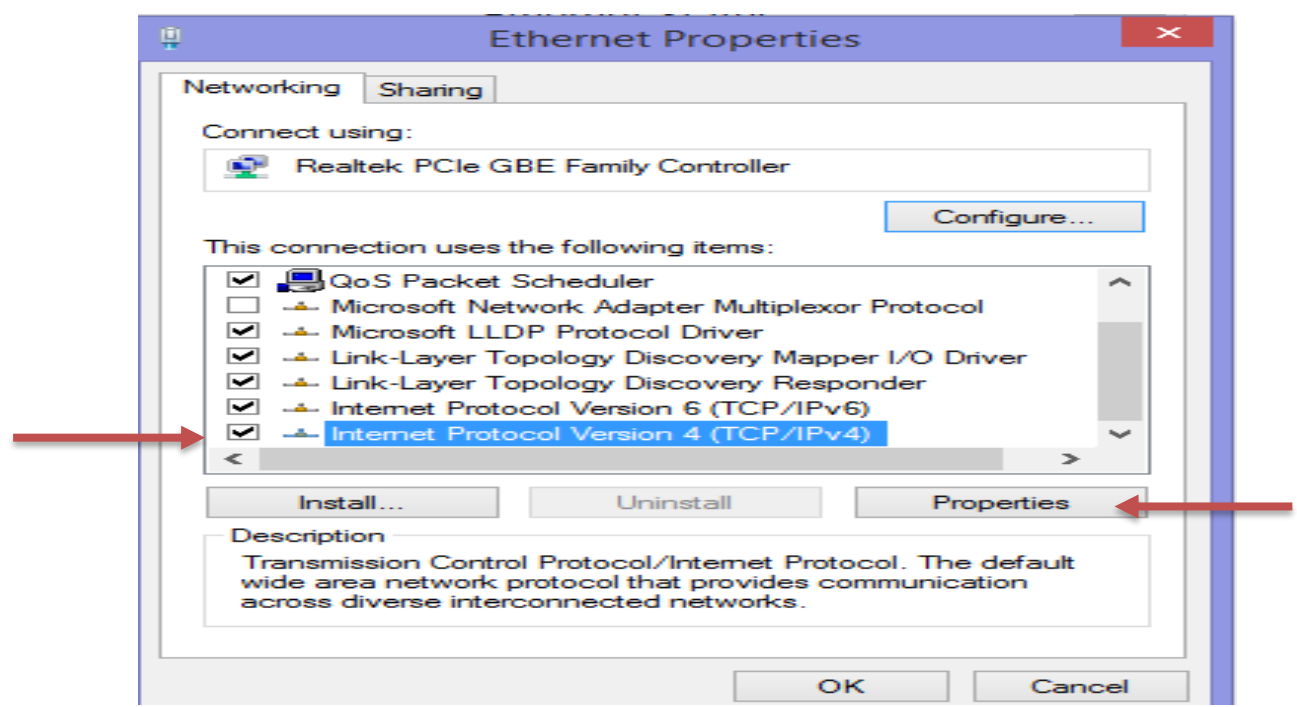
Double click on your Ethernet adapter



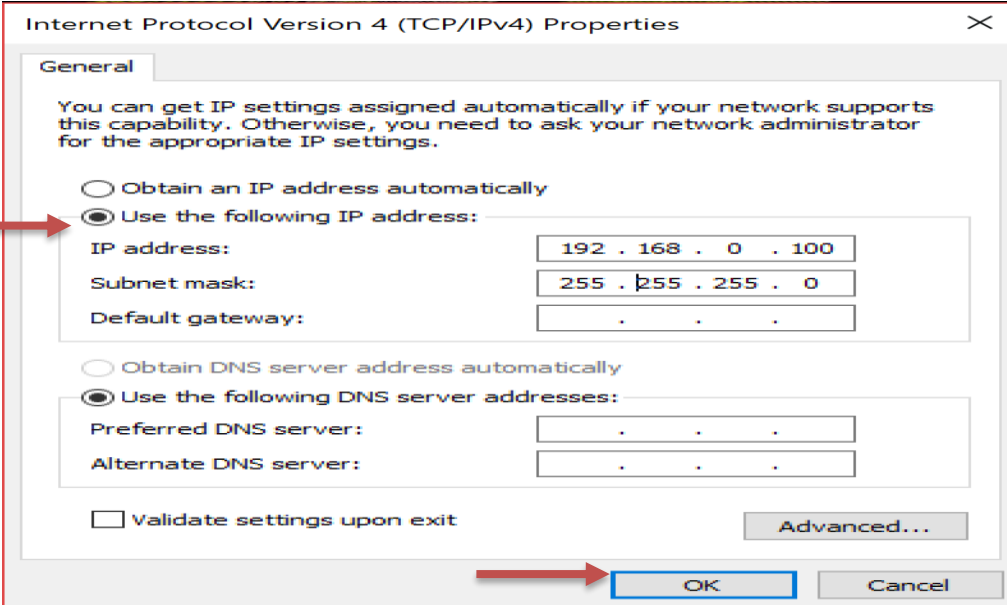
Click on “properties”



Highlight “(TCP/IPv4)” and then click properties



Select “Use the following IP address” enter
IP: 192.168.0.100
Subnet mask: 255.255.255.0
& click OK



Internet Protocol Version 4 (TCP/IPv4) Properties

General

You can get IP settings assigned automatically if your network supports this capability. Otherwise, you need to ask your network administrator for the appropriate IP settings.

Obtain an IP address automatically

Use the following IP address:

IP address: 192 . 168 . 0 . 100

Subnet mask: 255 . 255 . 255 . 0

Default gateway: . . .

Obtain DNS server address automatically

Use the following DNS server addresses:

Preferred DNS server: . . .

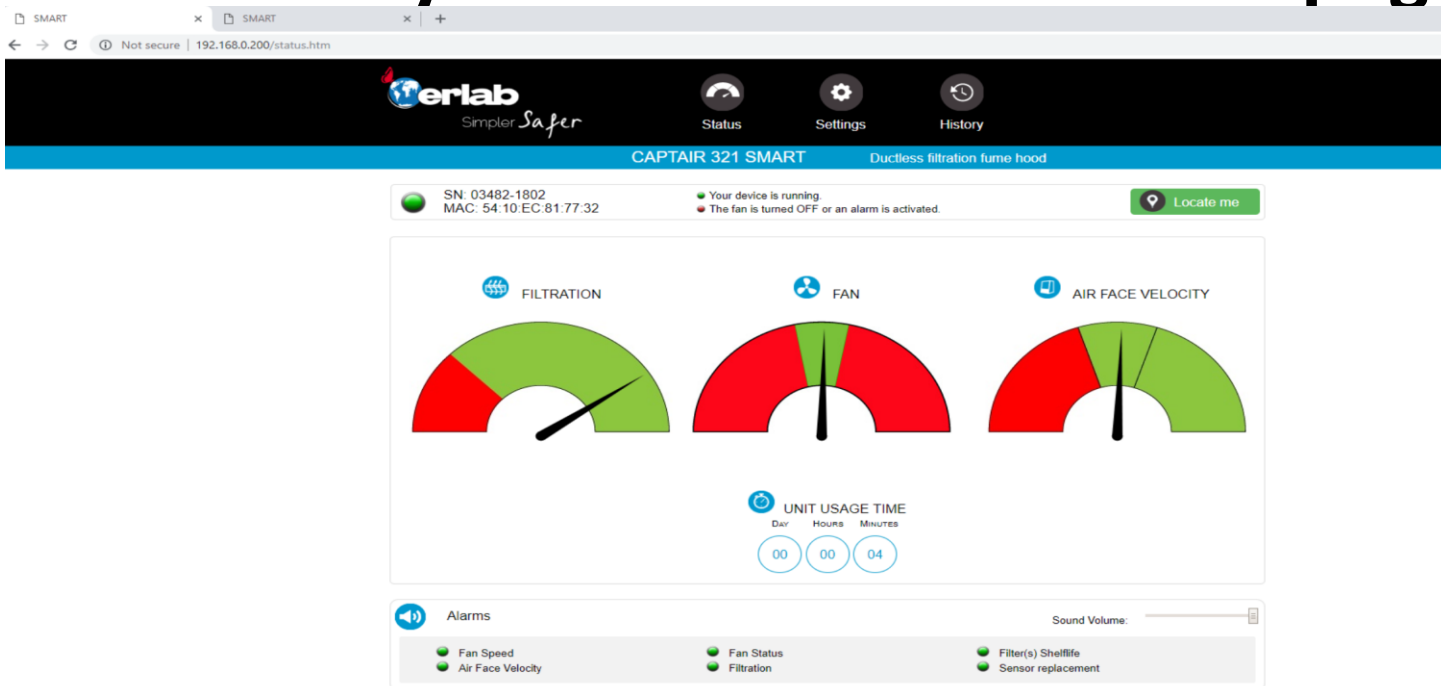
Alternate DNS server: . . .

Validate settings upon exit

Advanced...

OK Cancel

Open your browser (Google) and enter
192.168.0.200
you will see your unit on the “status” page





Status



Settings



History

User Name: erlab Password: smart

CAPTAIR 321 SMART

Ductless filtration fume hood



SN: 04544-2002
MAC: 54:10:EC:81:77:C0

- Your device is running.
- The fan is turned OFF or an alarm is activated.



Locate me

Modify settings and press Update



Date/Time

Date: 01/01/2001

Hours: 12

Minutes: 08

am ▼

Update



Network

- Mode

Static IP ▼

- Hostname

ER-321-0

- IP

192

168

0

200

- MASK

255

255

255

0

- GW

192

168

0

200

Data exchange with eGuard App activated

Update

Reboot



Fan

Setpoint:

RPM (Min: 1200 RPM | Max: 2800 RPM)

Update



Anemometer calibration

m/s [01/01/2001]

Update



Filter expiry date

Select Filter: ▼

Last replacement:

Next replacement in **730** Day

Update



Timer usage time

Next Test: **59h, 32m**

Test Frequency : hours

Enabled:

Update