



Direct connect with
Apple

Erlab units require you to connect with the supplied RJ45 cable for the setting configurations

SMART

- 321 392 633
- 391 632 714
- 481 483



Storage

- 822 1634
- 832
- 834



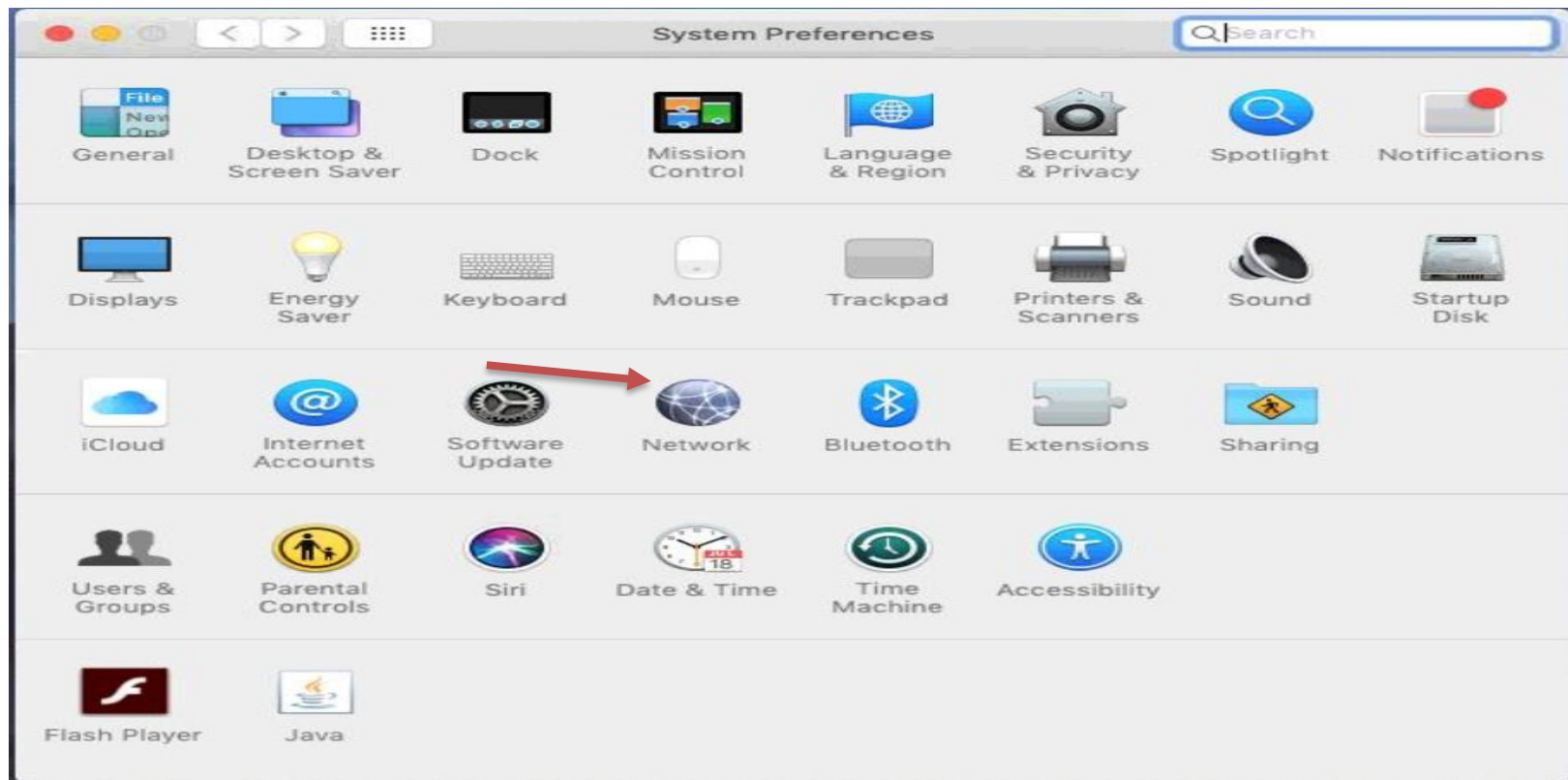
Halo Halo Sense



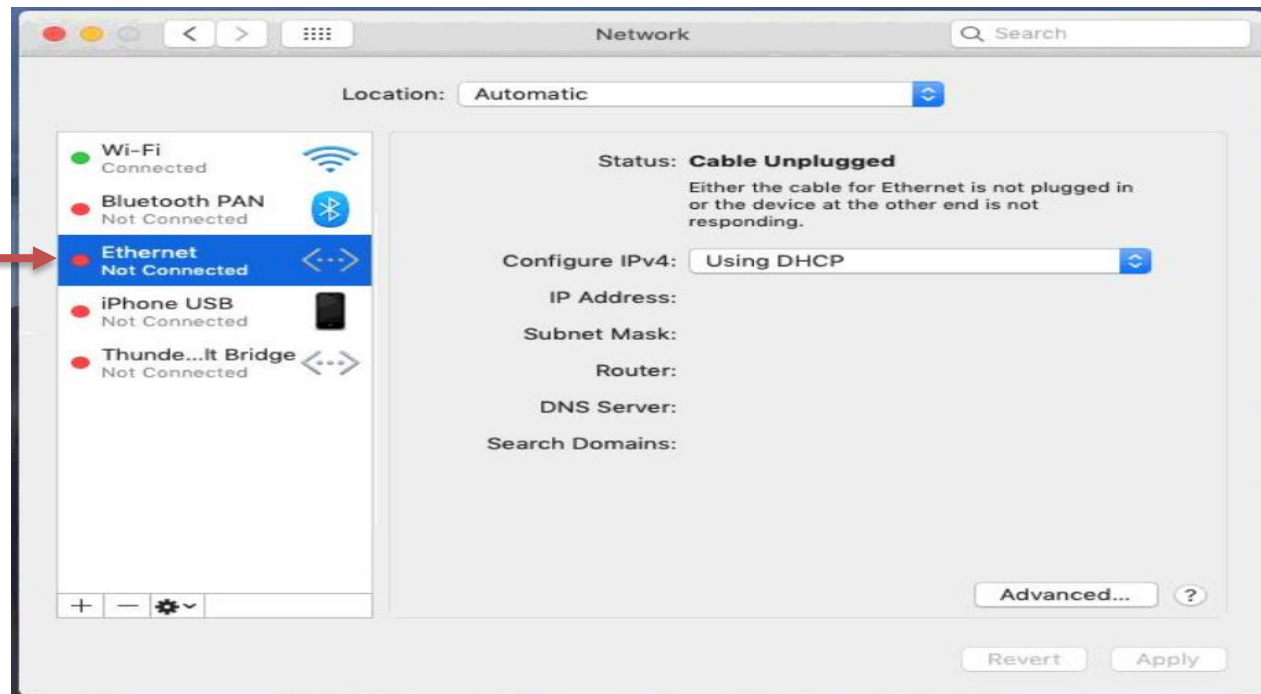
Change adapter settings:
Click on the “Apple” in the upper left
of the desktop
Select “System Preferences”



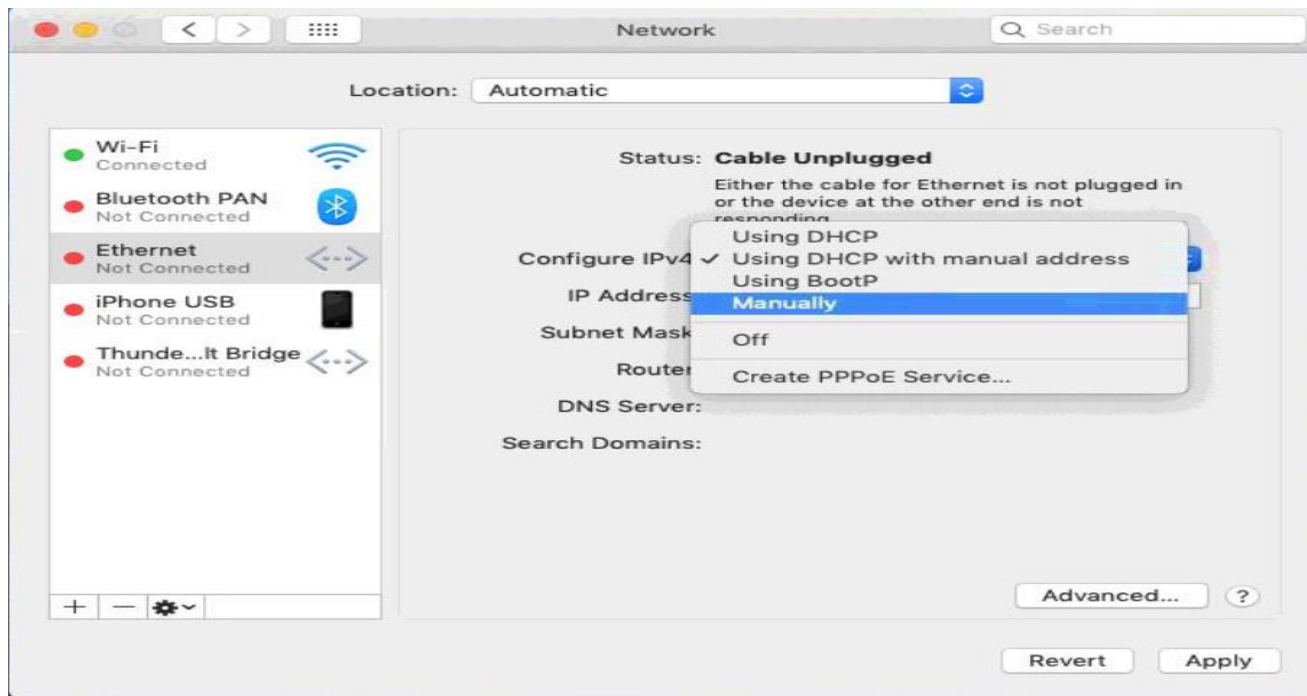
Double click on “Network”



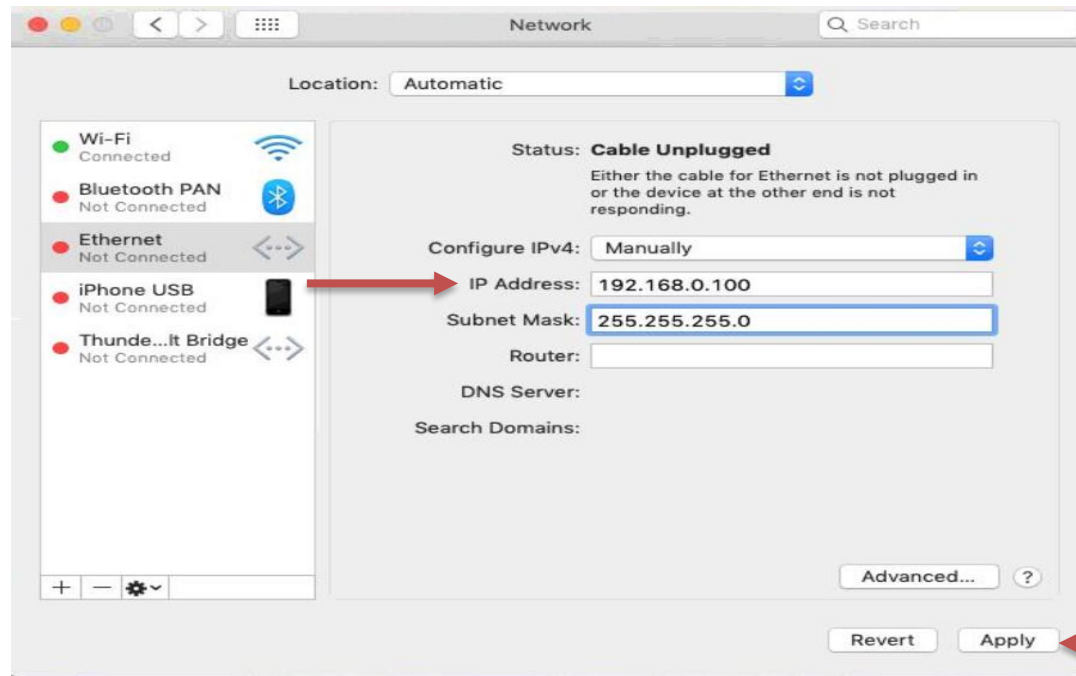
Highlight “Ethernet”



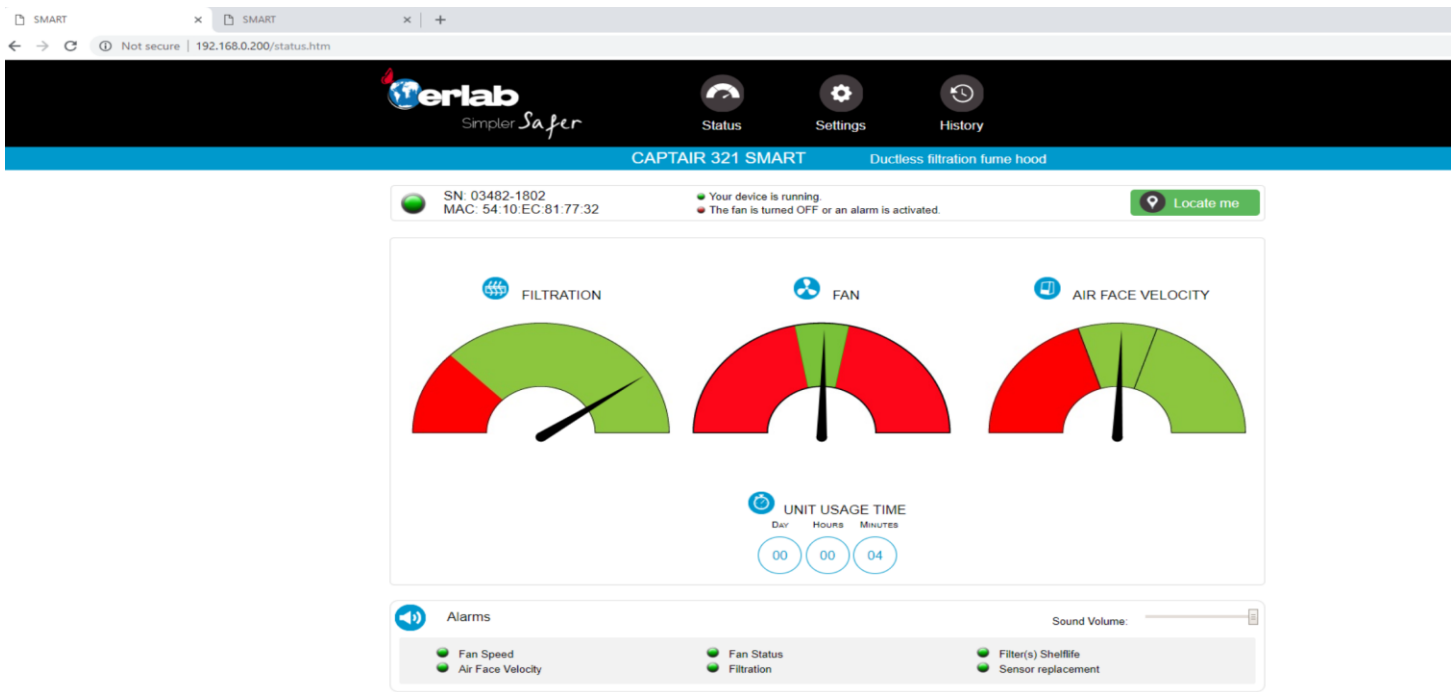
Click on the drop down menu on Configure IPV4: Select “Manually”



Now Enter
IP: 192.168.0.100
Subnet mask: 255.255.255.0
then click apply



Open your browser (Safari) and enter
192.168.0.200
you will see your unit on the “status”





Status



Settings



History

User Name: erlab Password: smart

CAPTAIR 321 SMART

Ductless filtration fume hood



SN: 04544-2002
MAC: 54:10:EC:81:77:C0

- Your device is running.
- The fan is turned OFF or an alarm is activated.



Locate me

Modify settings and press Update



Date/Time

Date:

Hours:

Minutes:

am ▼

Update



Network

- Mode

Static IP ▼

- Hostname

ER-321-0

- IP

- MASK

- GW

Data exchange with eGuard App activated

Update

Reboot



Fan

Setpoint:

RPM (Min: 1200 RPM | Max: 2800 RPM)

Update



Anemometer calibration

m/s [01/01/2001]

Update



Filter expiry date

Select Filter:

Last replacement:

Next replacement in **730** Day

Update



Timer usage time

Next Test: **59h, 32m**

Test Frequency : hours

Enabled:

Update